



Plate 1a. The flooded harbour at Powside.



Plate 1b. The remains of one of the two piers on the River Black Devon.



Plate 2a. A composite cutting taking the waggonway around the base of King's Seat hill.



Plate 2b. Remains of an embankment on the South shore of Gartmorn Dam.



Plate 3a. Excavation at Gartmorn.



Plate 3b. Detail of central section showing ash mass in the base.



Plate 3c. Very wide Tulligarth colliery "Tramway", built circa 1898.



Plate 4a. The Ochil Hills. 2011. Southern escarpment, from Stirling.



Plate 4b. Glenquey Moss, a peatland in Glen Devon. 2012. Greenknowes windfarm on the skyline. Traditional conifer plantation to the right. New native woodland on the left.



Plate 5a. Menstrie Glen. 2013. Changing grazing patterns. Sheep sward on right of fence, Highland cattle grazing on the left. "Buzzard posts" show attraction of increased prey populations in longer sward.



Plate 5b. Menstrie Glen. 2015. Sheep give way to trees. Early planting of Jerah Forest.



Plate 6. Sticky Catchfly growing on Yellow Craigs above Blairlogie church yard.

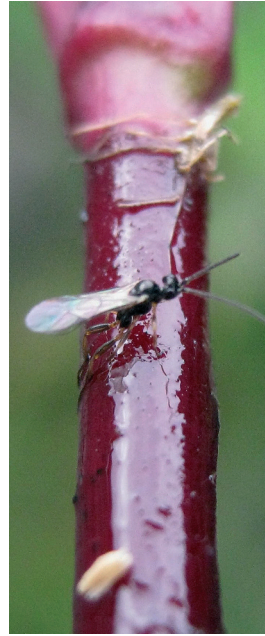


Plate 7. Sticky Catchfly top left: isolated plant, top right: sticky fly catching area of the stem, bottom: flowers.

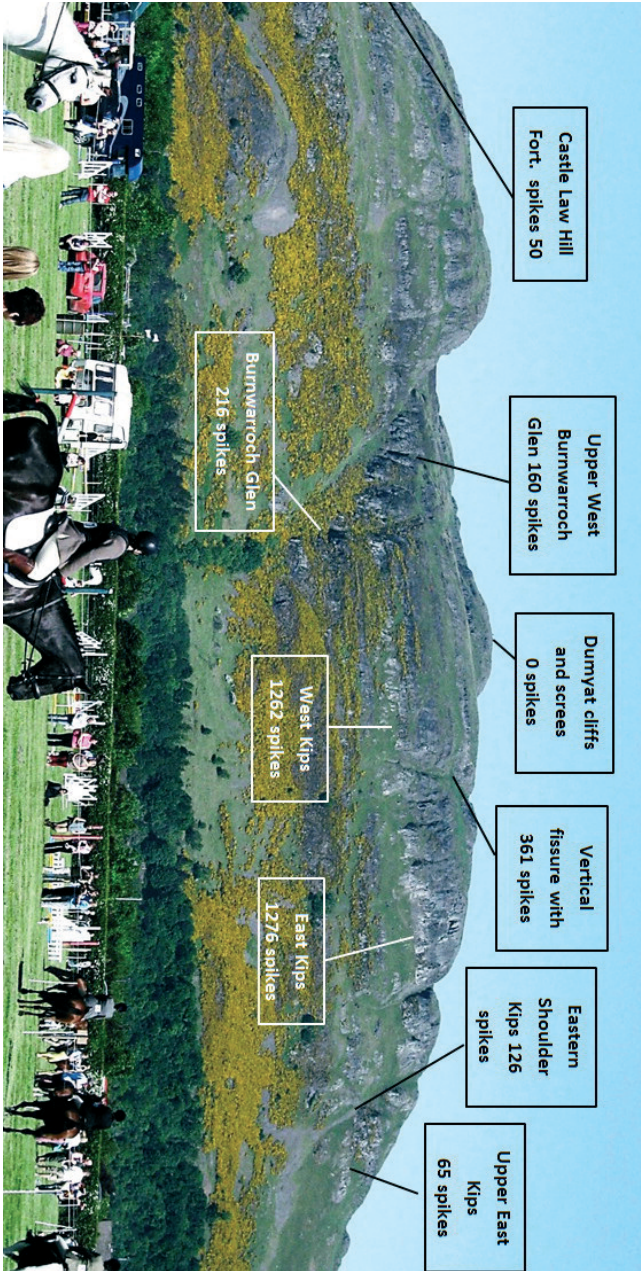


Plate 8. Sites of Sticky Catchfly colonies on the southern slopes of Dumyat.

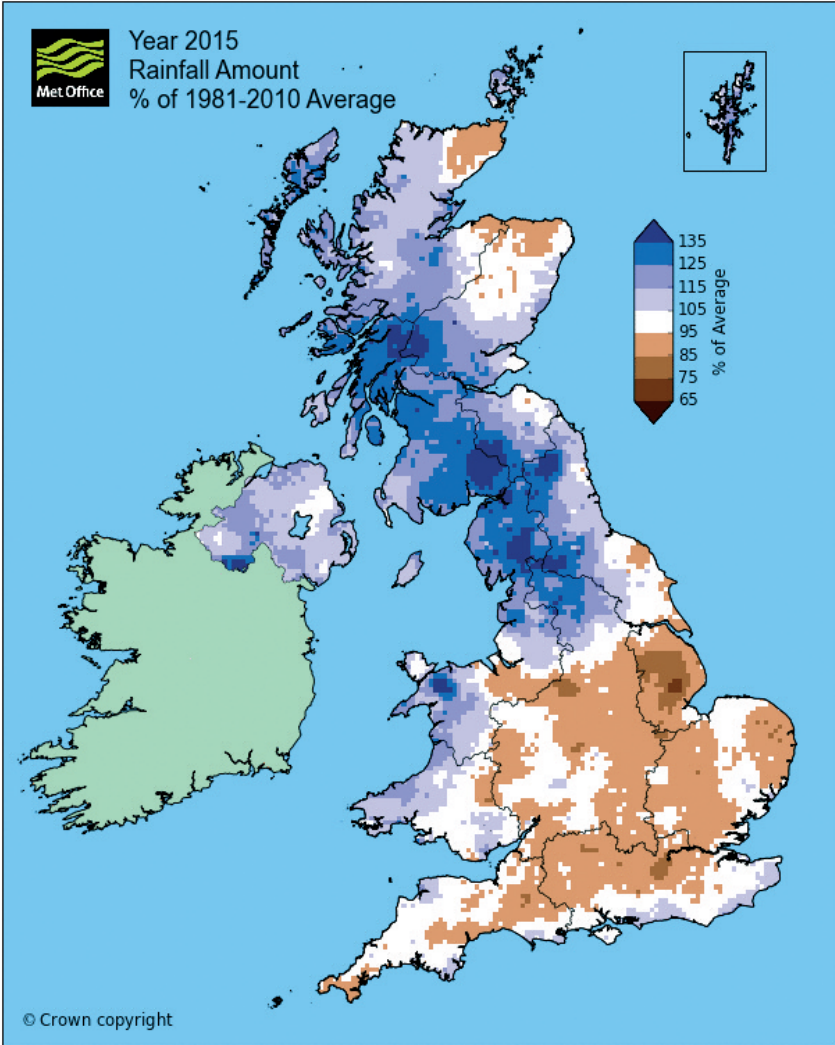


Plate 9. Rainfall average for 2015.
Values are expressed as percentage of the 1981-2010 average rainfall.

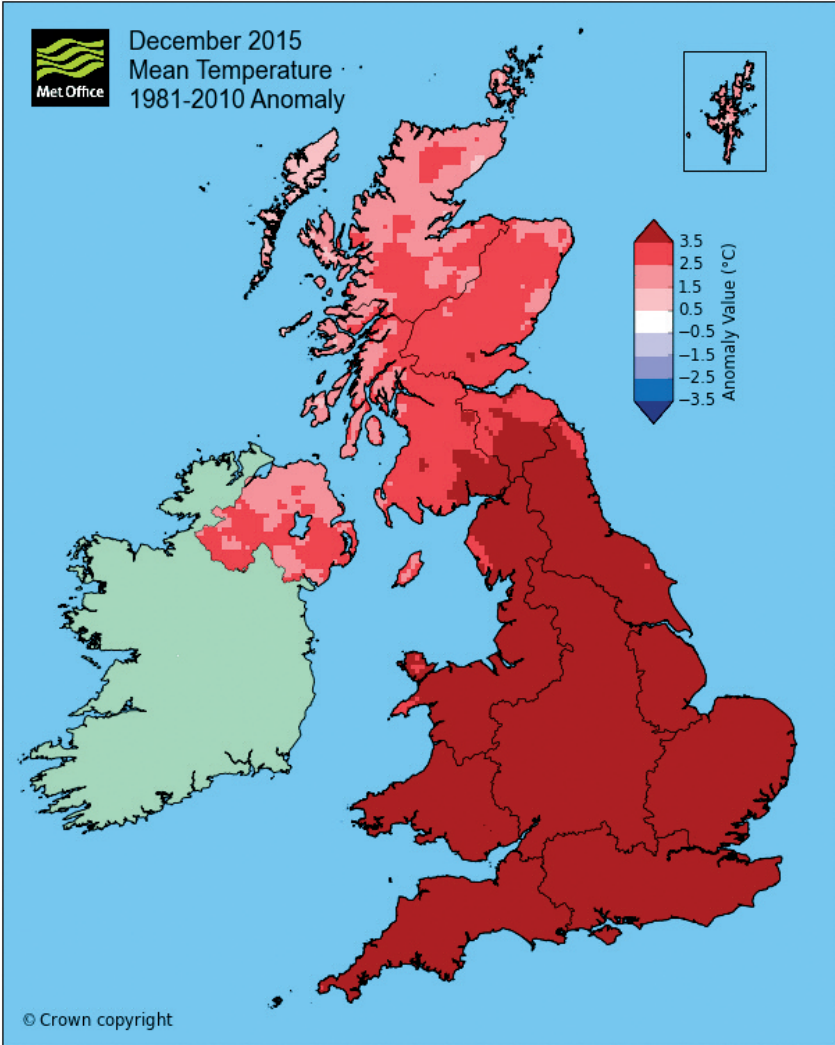


Plate 10. Mean temperature for 2015.
Values represent the deviation from the averages of temperatures between 1981 and 2010.

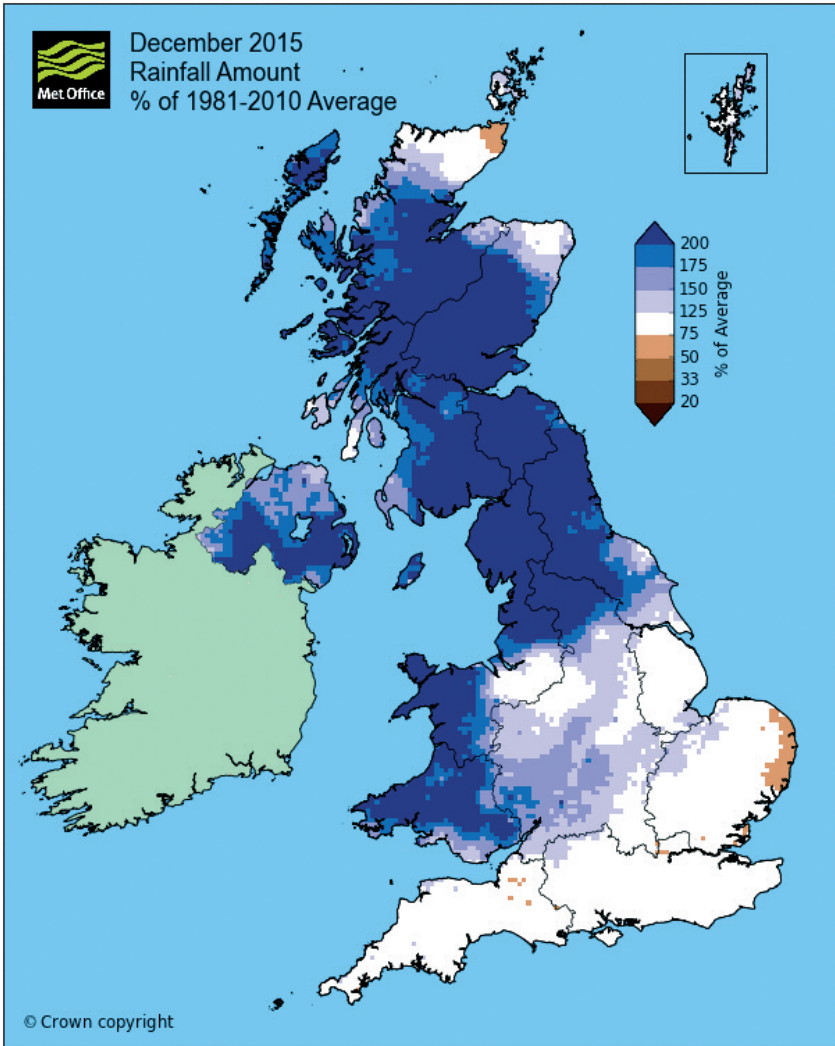


Plate 11. Rainfall amount for 2015.
Values represent the proportion of the average rainfall amount between 1981 and 2010.

